

E.N.S.M. DE NANTES

Architectes : M. M. Arrelche, Leprieux    Entreprise : E. G. T. P.  
Le Guillou

BATIMENT : A

FUTS - SEMELLES

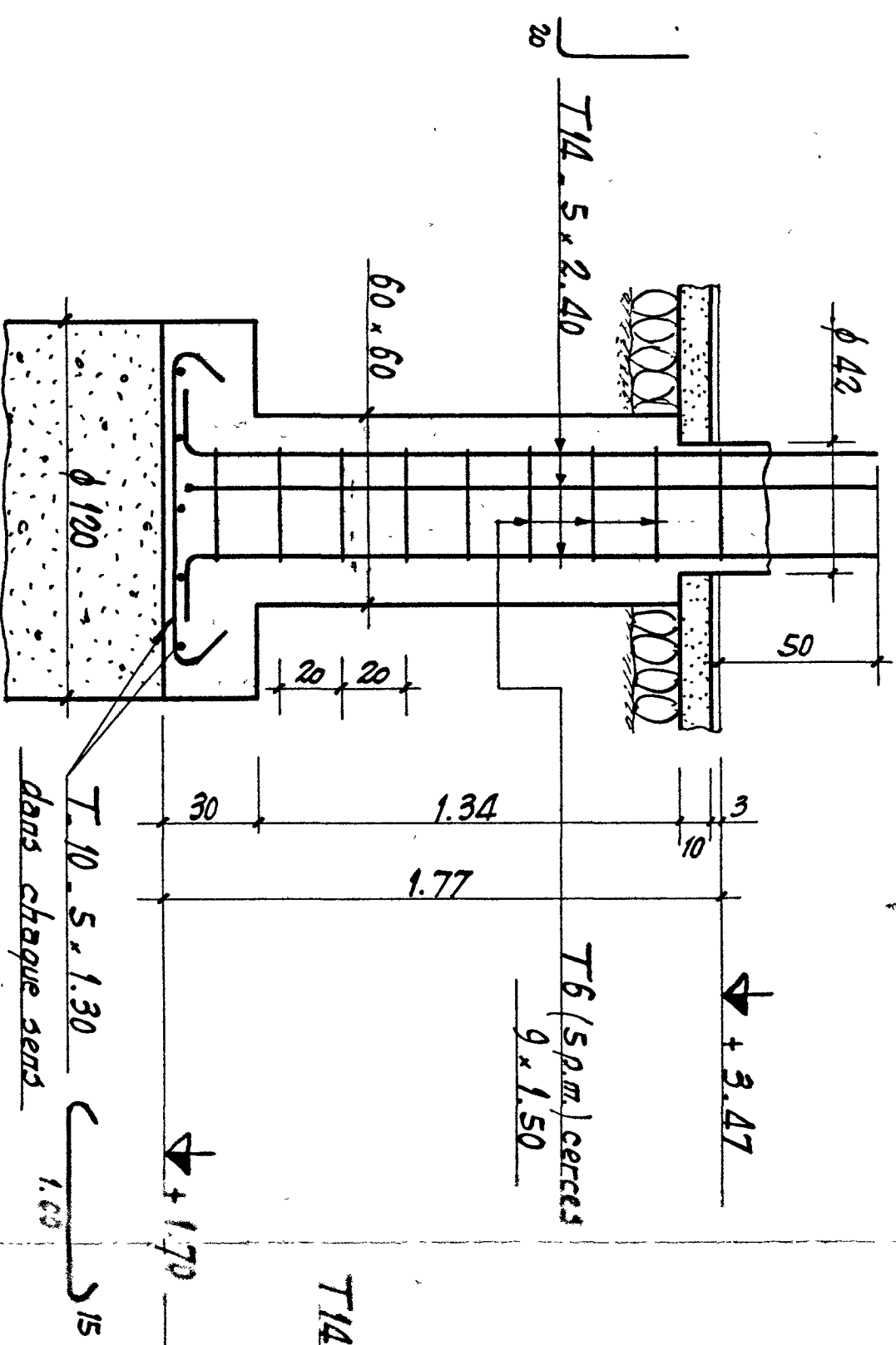
Estelles : 0.05 p.m.

N° 46

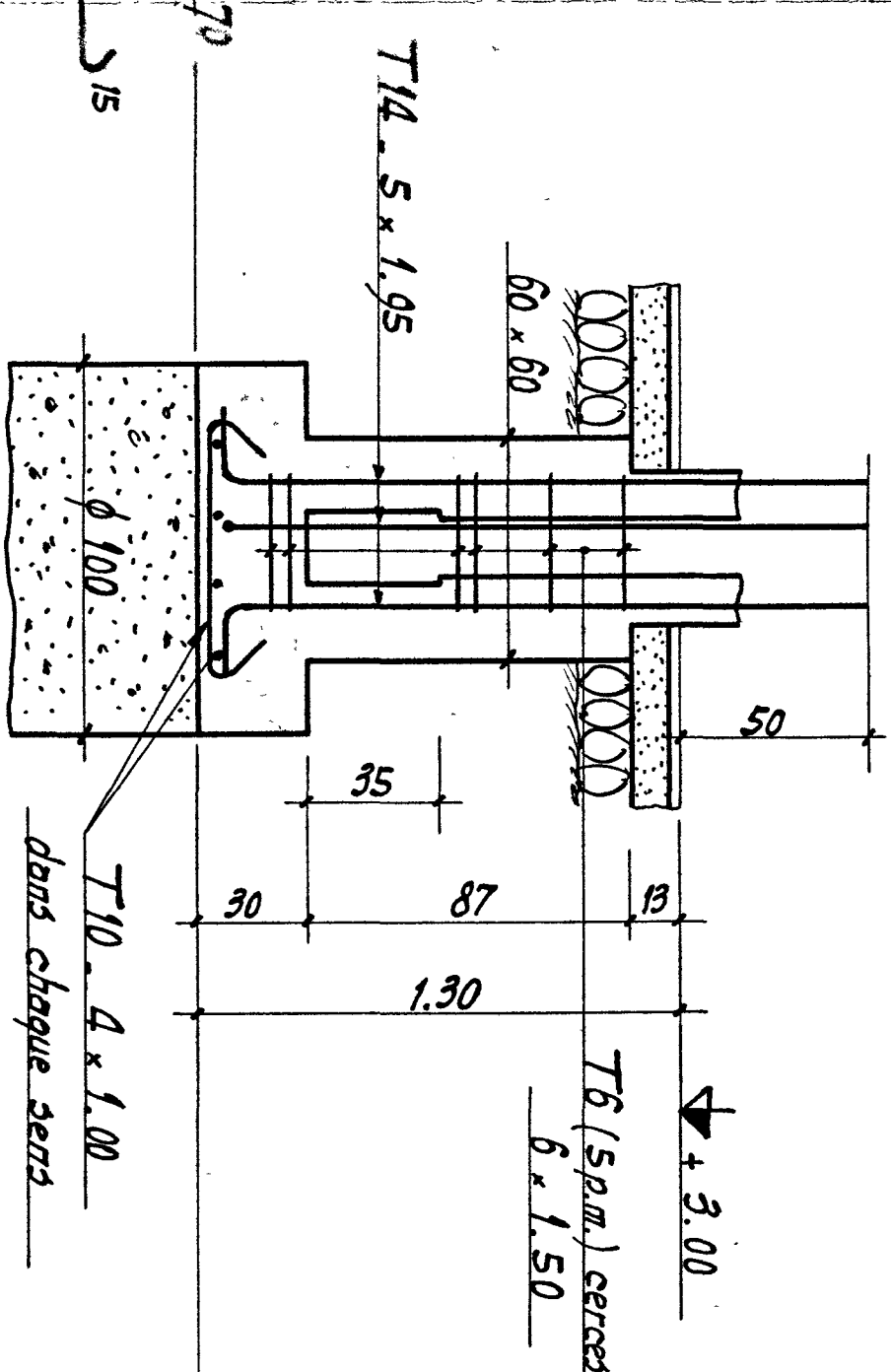
600.80'cm² Os. de 1000.280'cm² Dessiné par : J. Verifié par : J.

Poids des aciers indiqués sur ce plan = 458\*

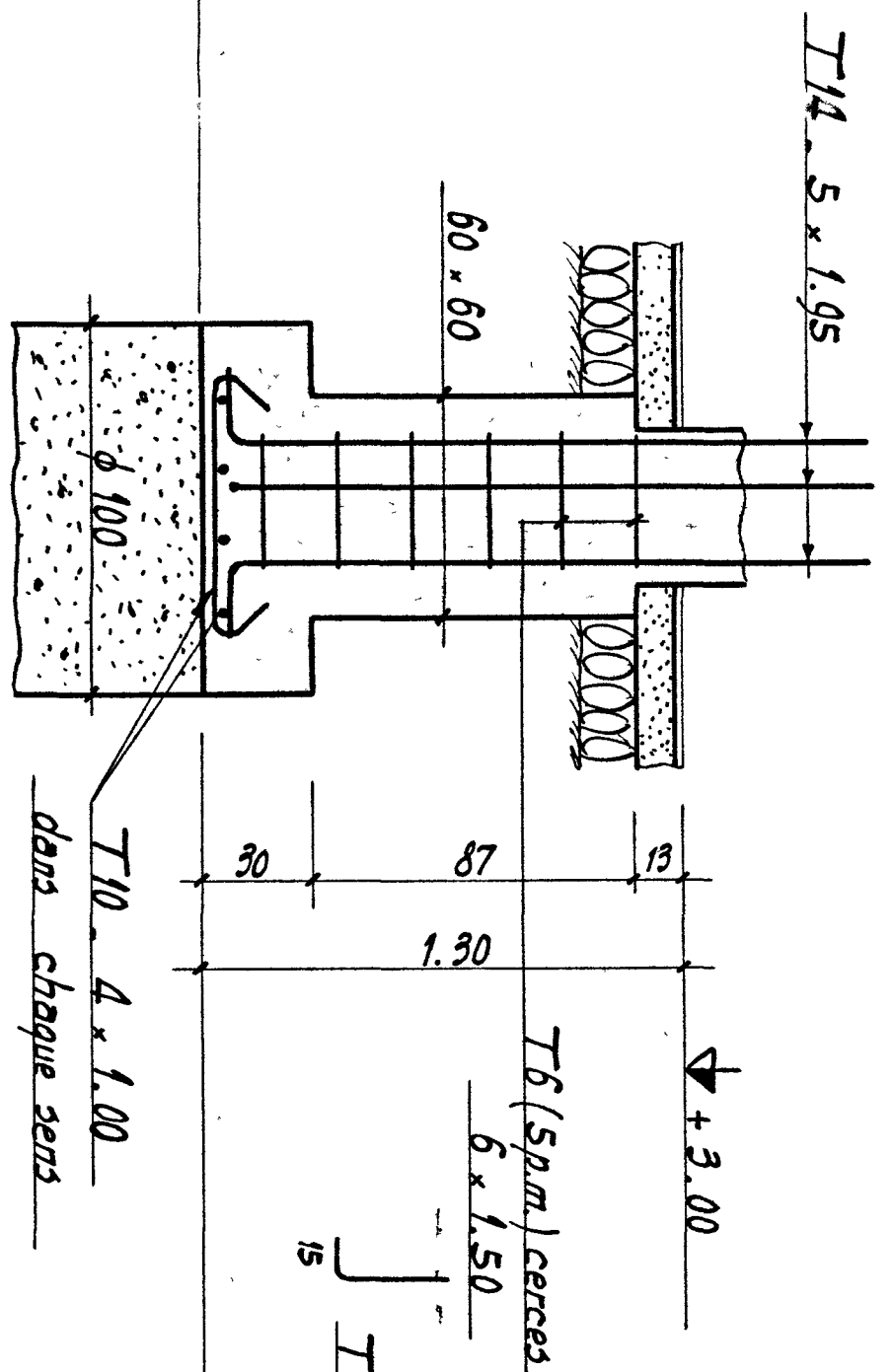
F6 (3 sembl.)



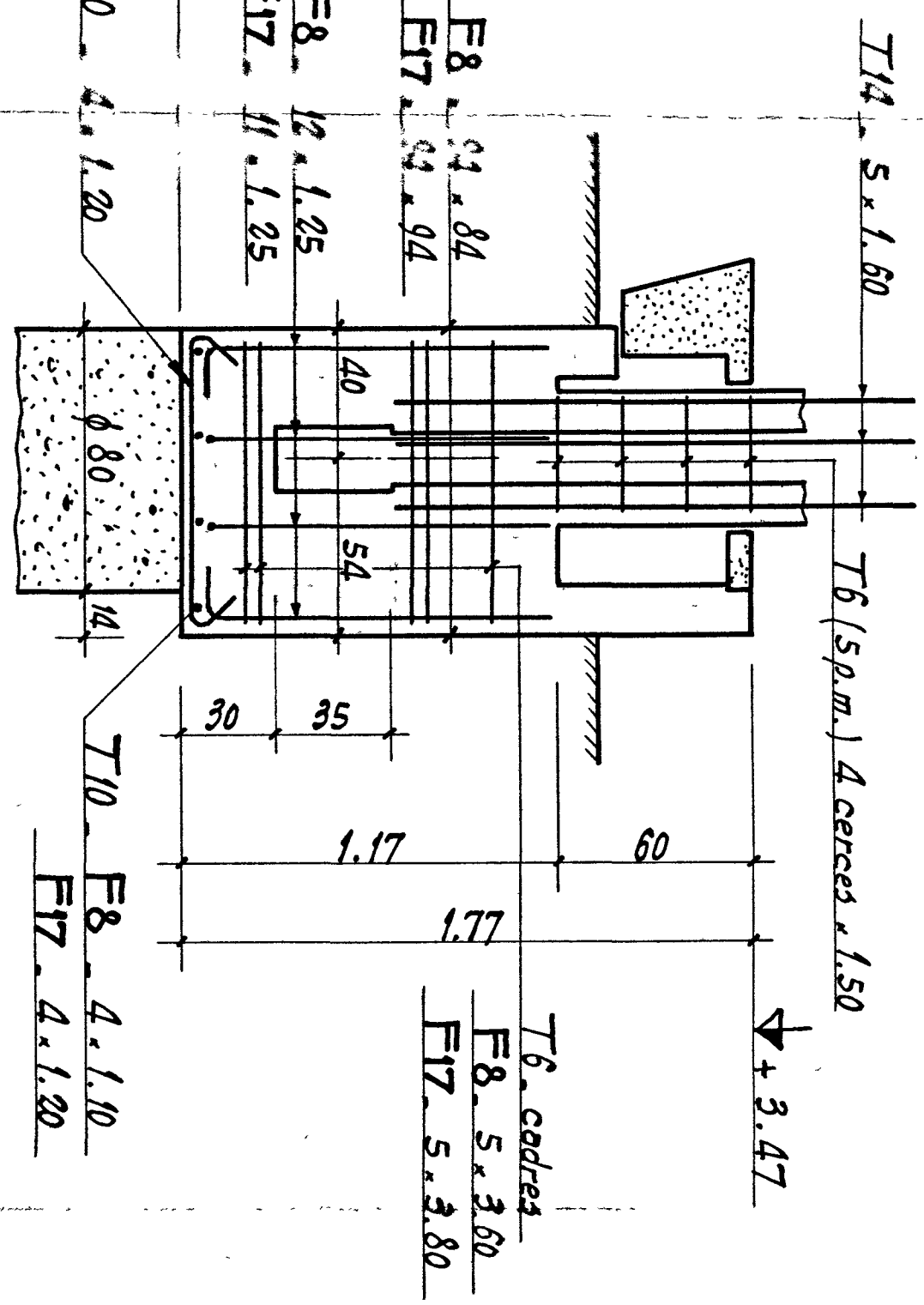
F7 (2 sembl.)



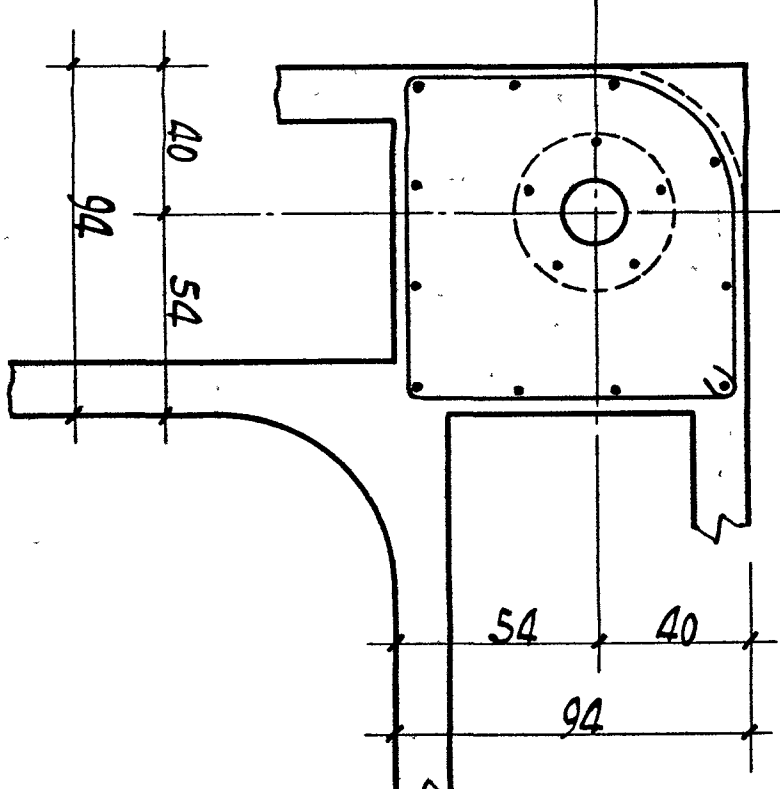
F7A (1 seul)



F8 - F17 (1 de chaque)

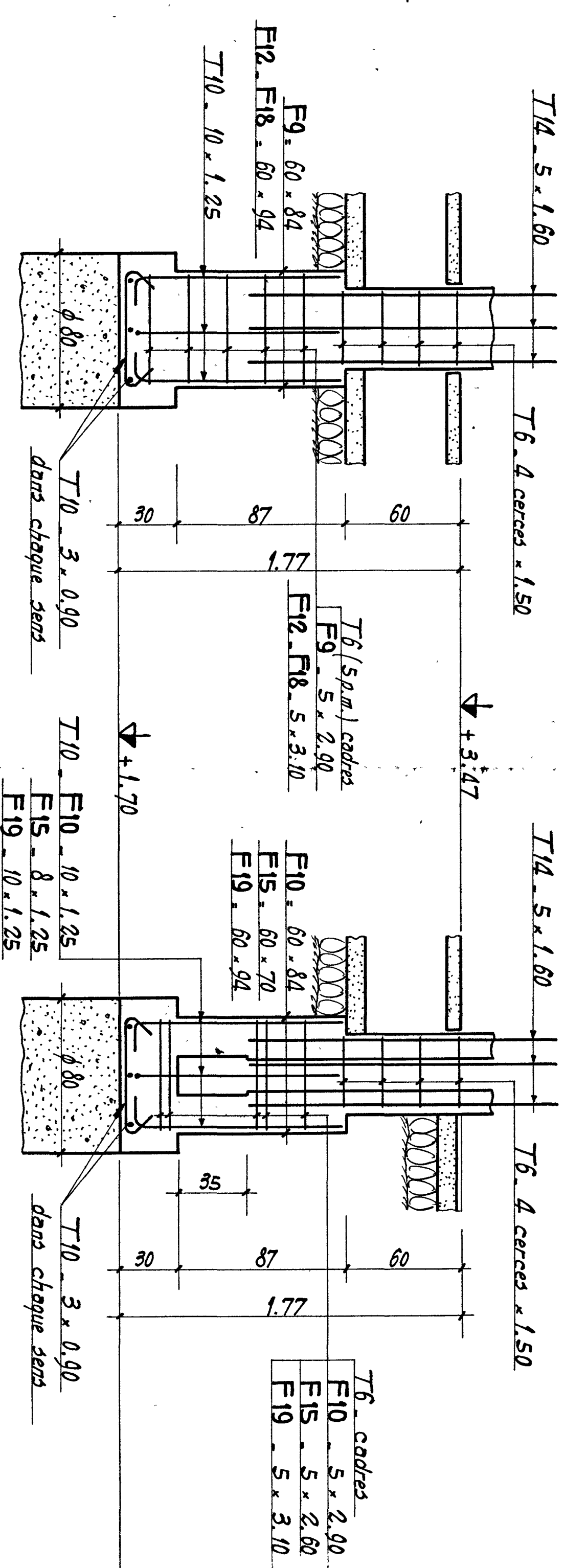


F17

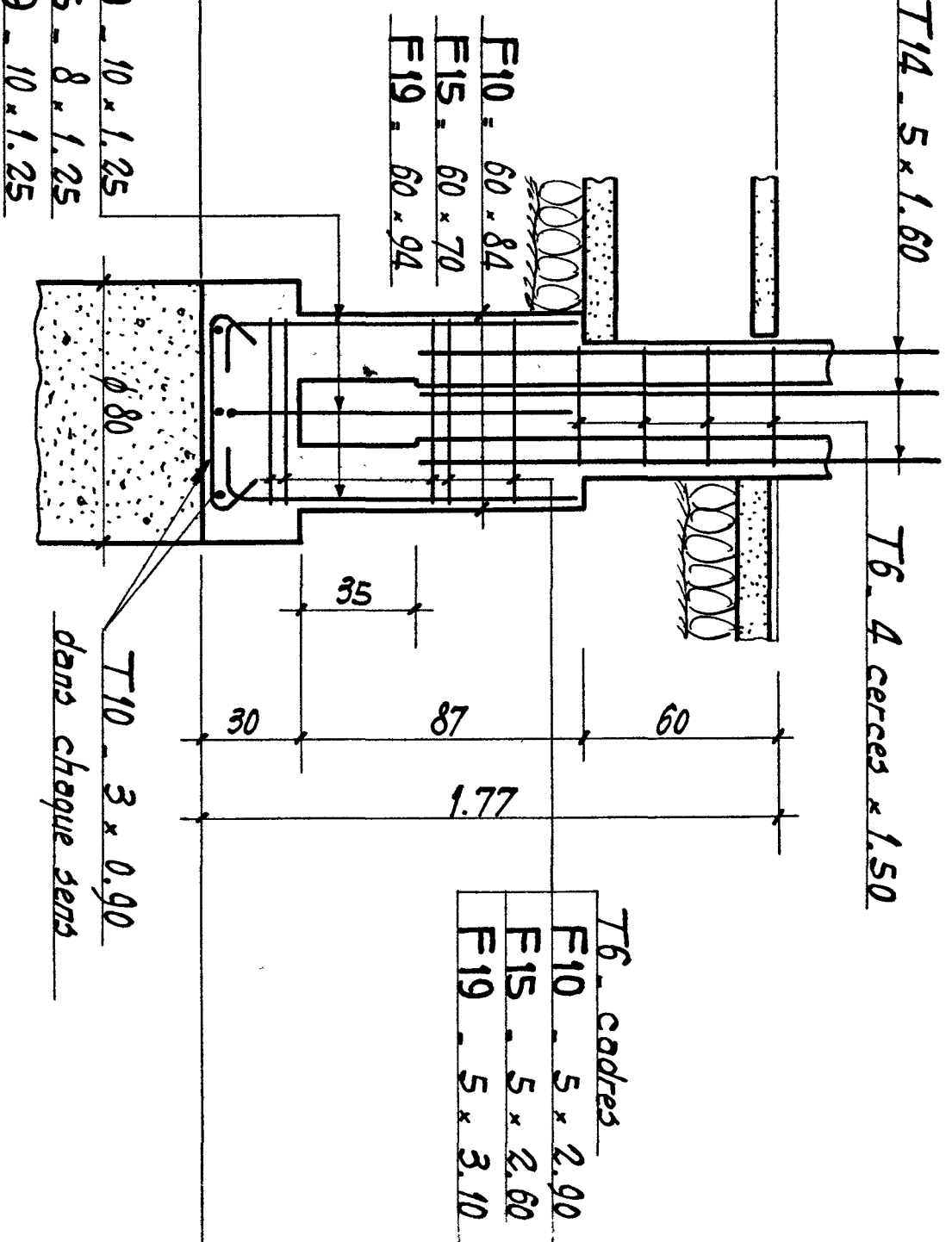


F19

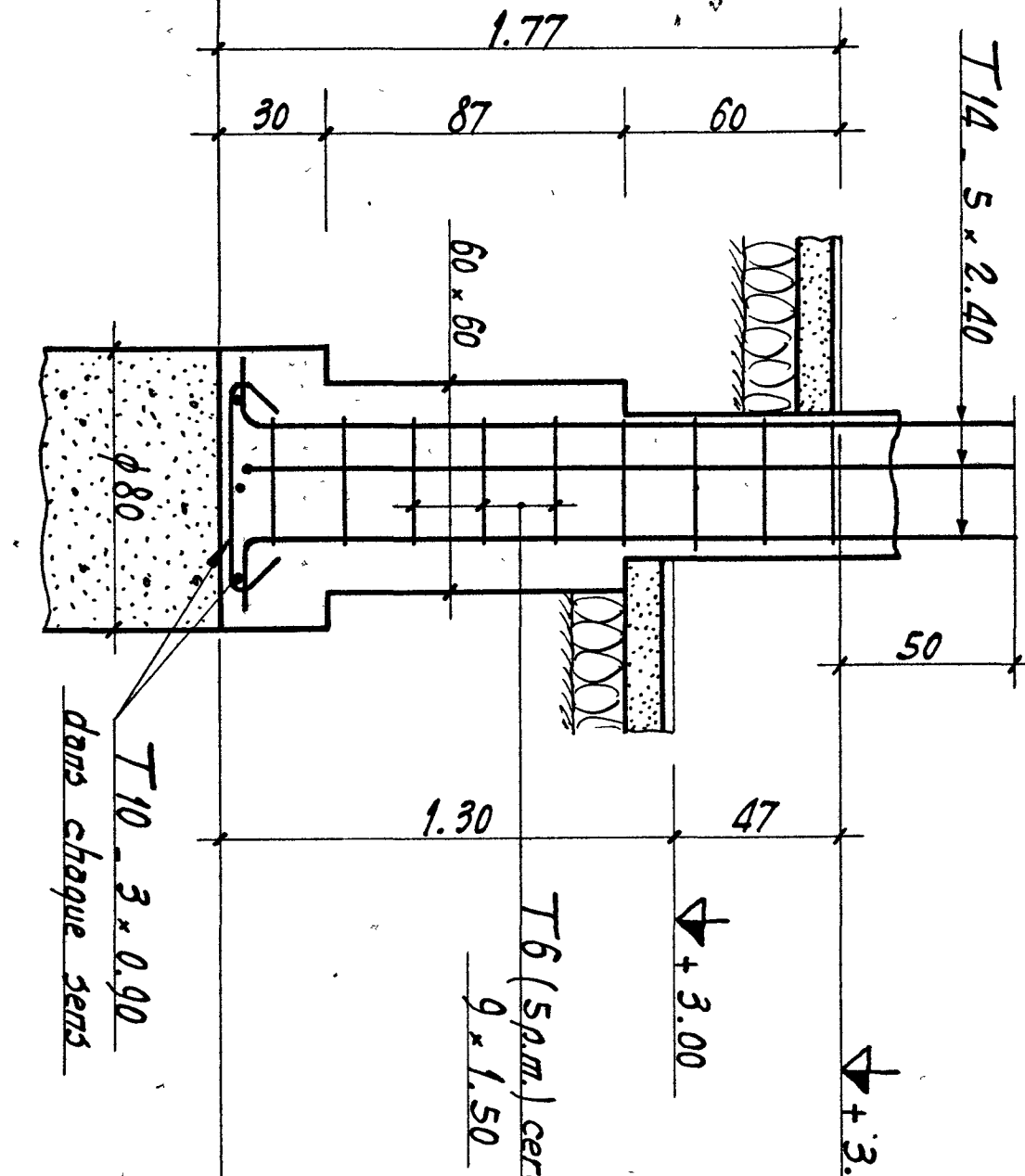
F9 - F12 - F18 (1 de chaque)



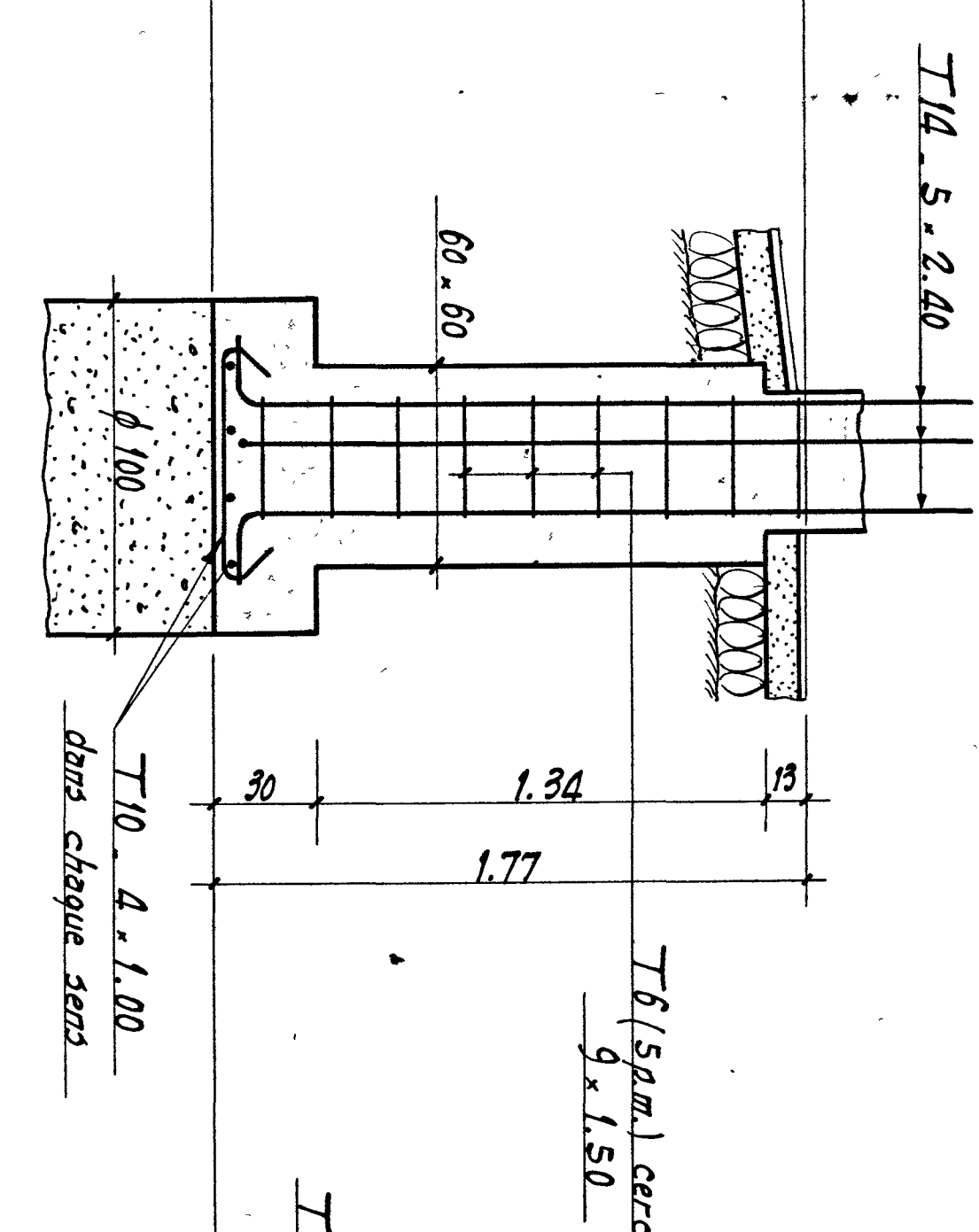
F10 - F15 - F19 (1 de chaque)



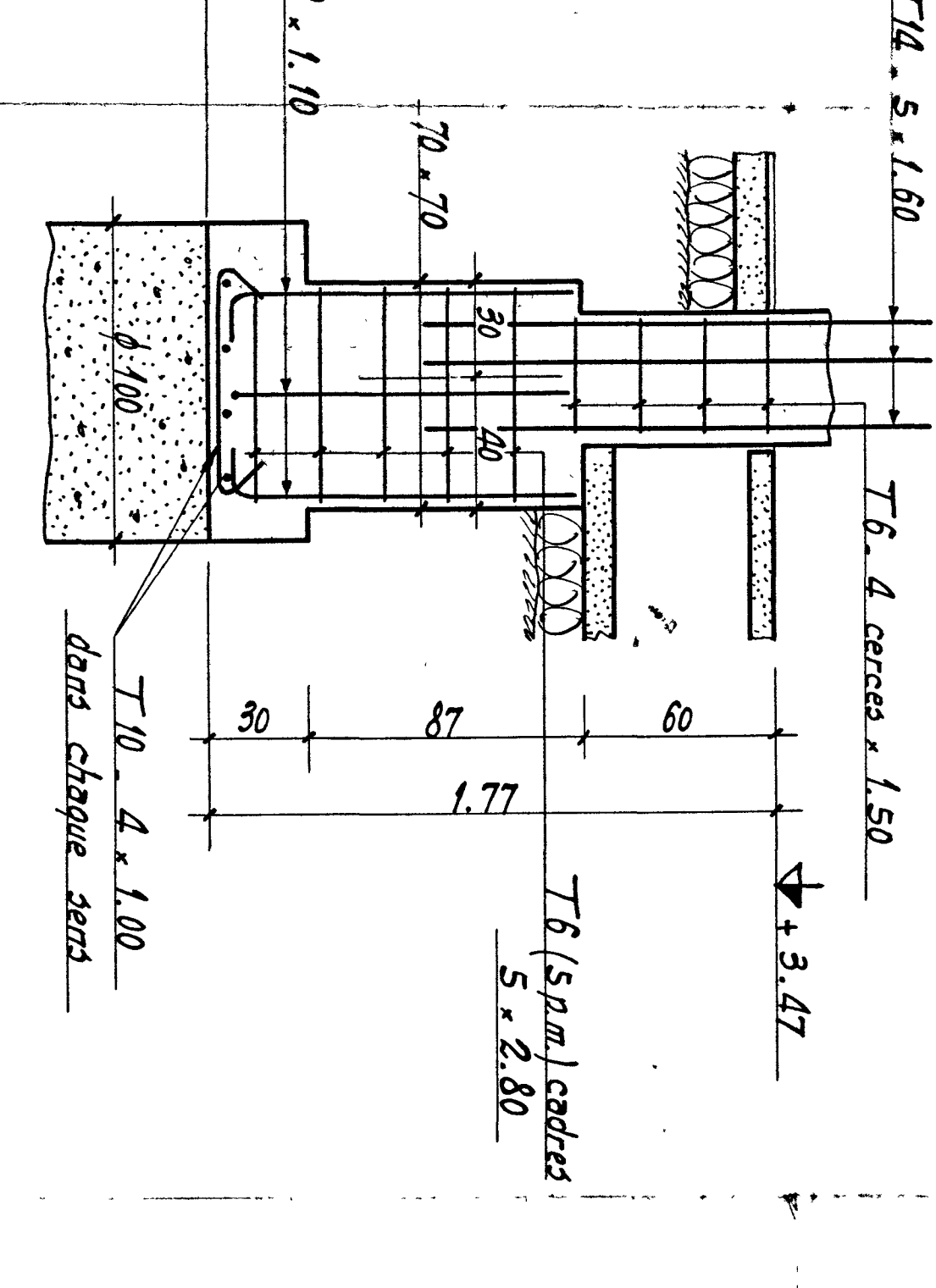
F11 (1 seule)



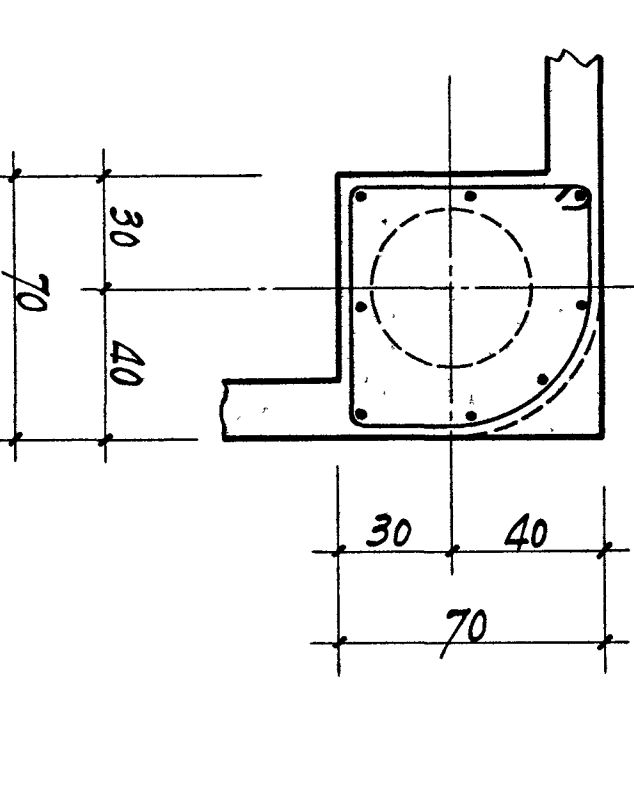
F13 (1 seule)



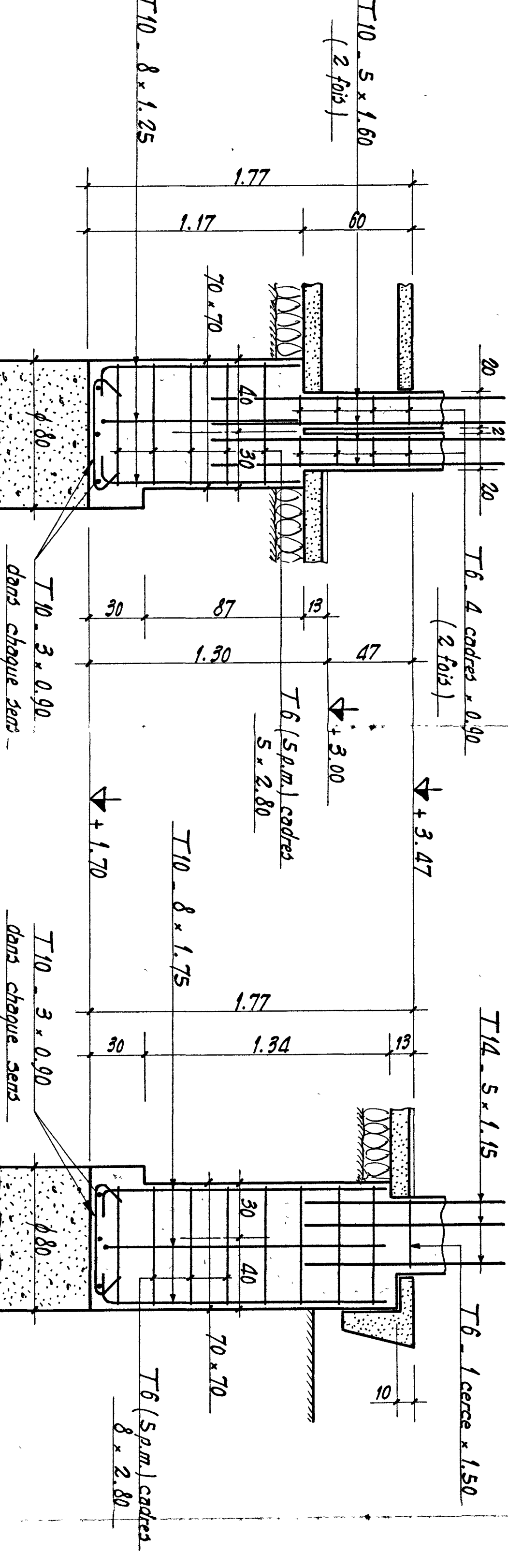
F14 (1 seule)



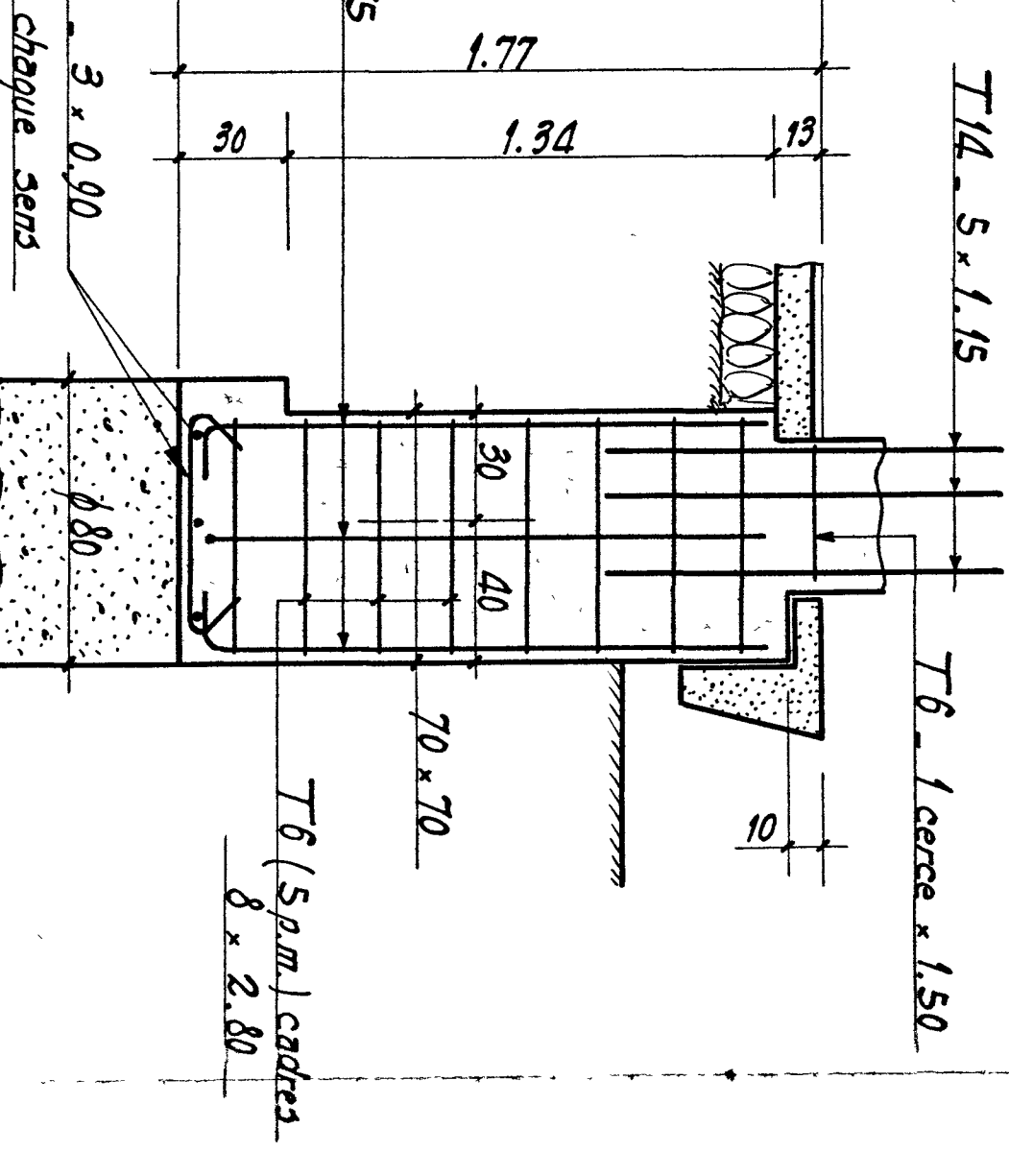
F20



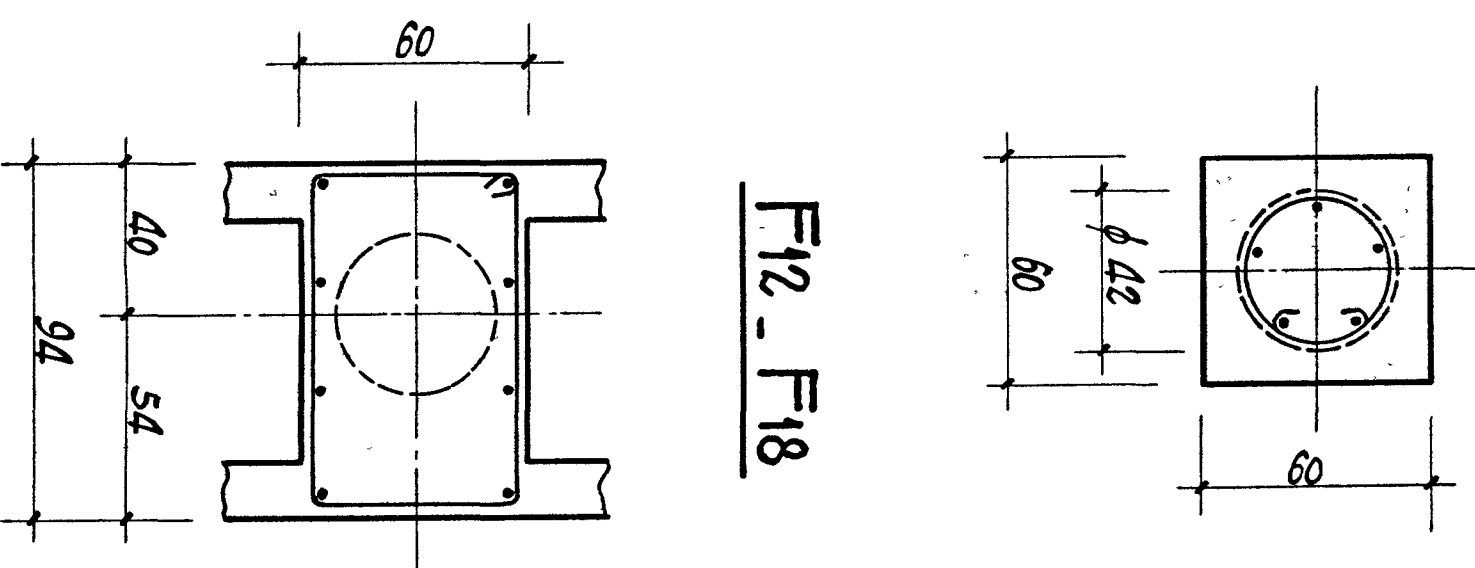
F16 (1 seul)



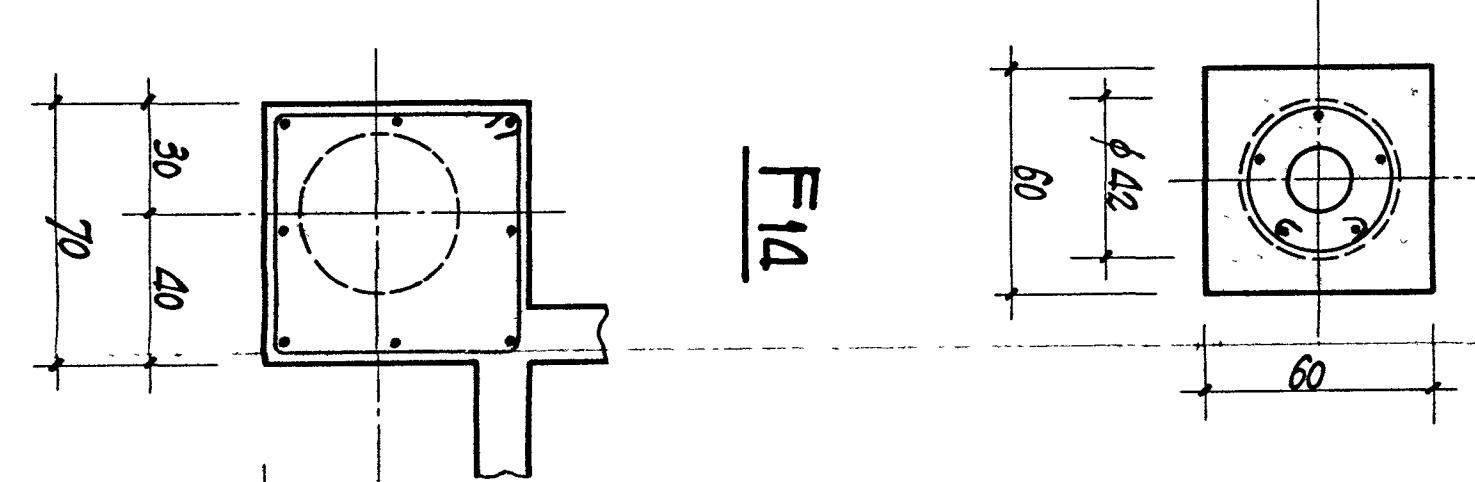
F20 (1 seul)



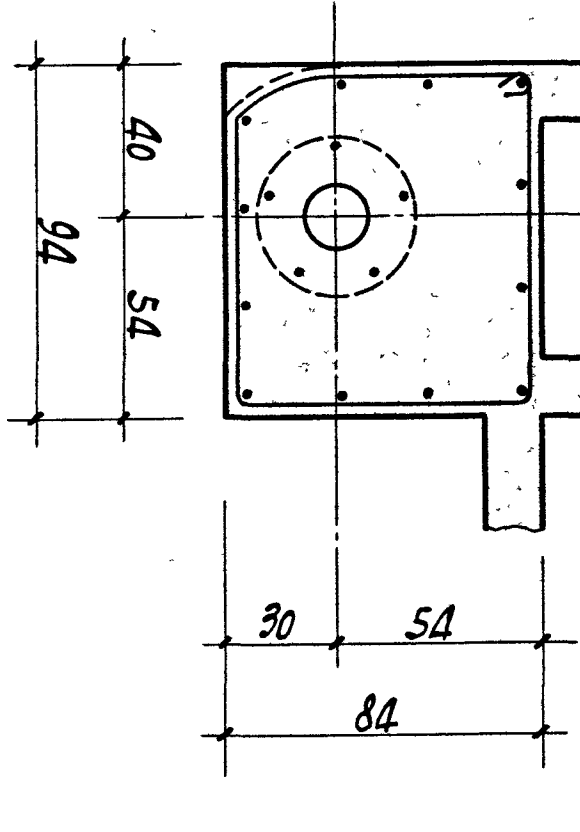
F5 - F6 - F7A - F11 - F13



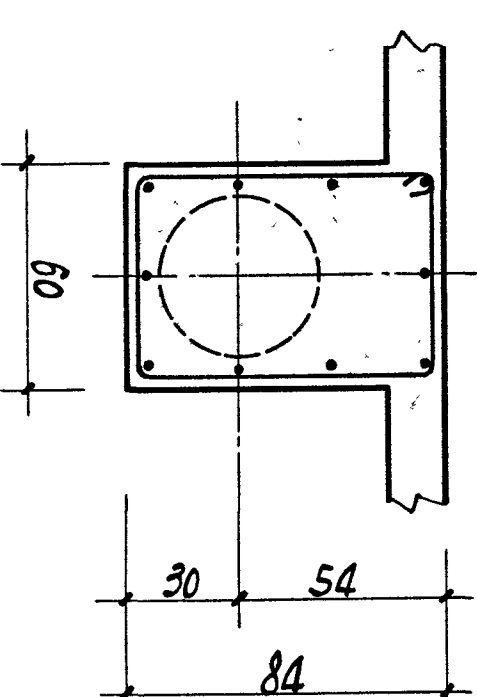
F7



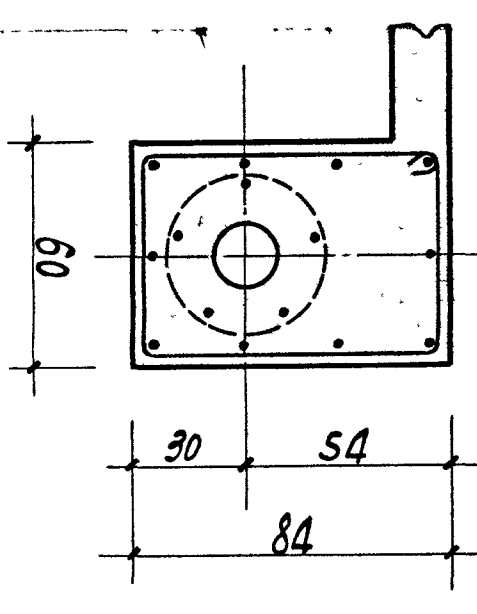
F8



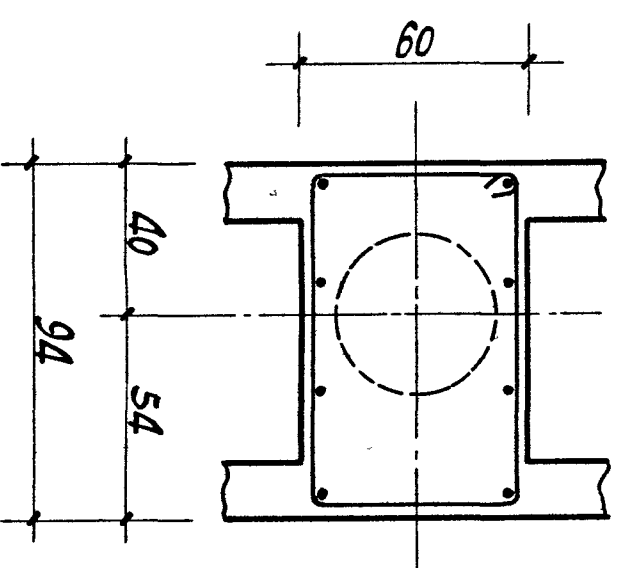
F9



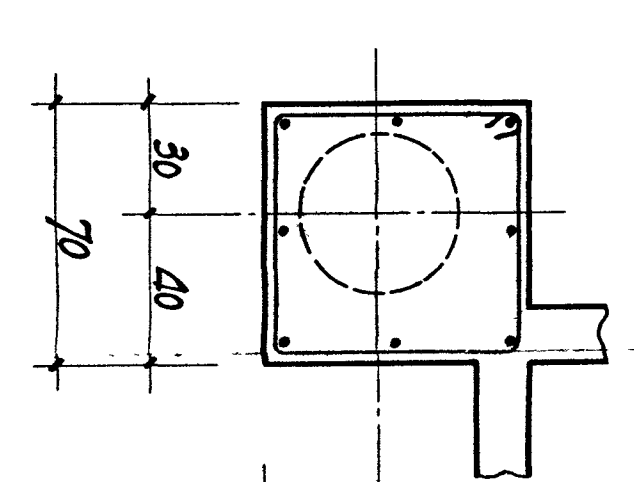
F10



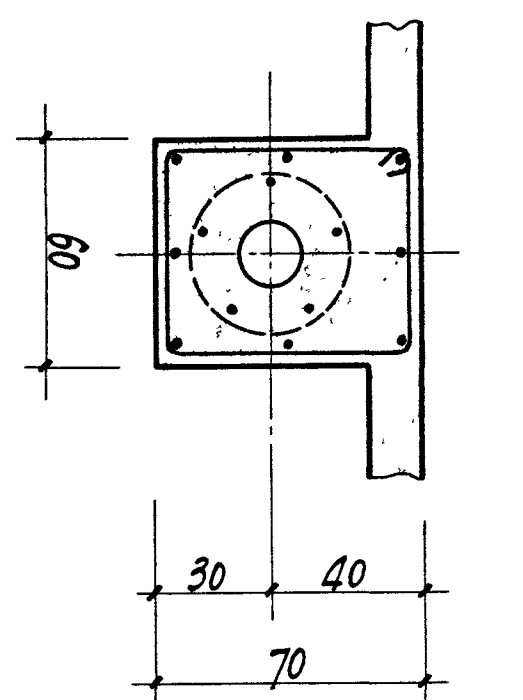
F12 - F18



F14



F15



F16

